

# The Door of Martin Luther Church

December 2011

**"Sharing the Good  
News of Jesus  
Christ"**



*Martin Luther Church, as a congregation, welcomes and celebrates the richness and diversity of all God's people, regardless of where they've come from or where they are in their life's journey.*

**The Evangelical Lutheran Church  
In America**  
9235 West Bluemound Road  
Milwaukee, WI 53226-4406

## Worship Opportunities



### Christmas Eve Services

Saturday, December 24

4:00 PM Family Worship Service

10:10 PM Carol Sing

10:30 PM Candlelight Service

### Christmas Day Service

Sunday, December 25

10:30 AM One Worship Service Only

Church Fax# .....414.476.9444  
E-Mail: ..... mlc@martinlutherchurch.net  
Rev. Ari Mattson.....414-476-9411  
Cell phone: 262-501-3996

Email: pastor@martinlutherchurch.net  
Deanna Ingelli,  
Council President..... 262.695.0483  
Marie Madderom  
Administrative Assistant.. 414.476.9411  
Kelly Kuhl  
Organist & Choir Director...262-642-6303  
Lani Knutson  
Children's Choir Director....414-477-9364  
Darlene Ziemendorf,  
Education Coordinator.....414.453.5408  
Crystal Solie, Seminarian  
Rev. Richard Weeden, Clergy Member  
Rev. Diane Olson, Clergy Member  
Ray LeMay,  
Custodian .....414.294.3255  
Greater Tosa Interfaith.....414.453.5750

**The December issue of  
THE DOOR**

is available online at

<http://www.martinlutherchurch.net/>



## PASTOR'S PEN

I know I've said it before, but I am very excited to be here. The welcome and energy that has been shown to me and my family has been incredible and I look forward to applying our energy to ministry in the years ahead.

I'd like to take time to share some about myself and my hopes for our partnership here at Martin Luther Church. In order to do that, I'd like to share three of my favorite Bible verses.

Romans 12:2: "Do not be conformed to the ways of this world, but be transformed..." In baptism, we are all claimed by God and called to be part of the Body of Christ. That means that all of us get to share in the work of God in our own way. Unlike the standards of this world that reward us based on what we've accomplished, God rewards us with life and freedom as a gift and we are transformed to use our gifts not just to make a living, but to also make the world a better place.

Micah 6:8: "God has shown you, O mortal, what is good [...] to do justice, to love mercy, and to walk humbly with your God." This verse sums up our mission so well. Because we are a congregation that is called by, gathered around, and sent by Jesus, we practice his mission. We do justice by looking beyond our walls and caring for the needs of our community and the world. We love mercy by caring for each other as family and welcoming the stranger and visitor that comes in our doors. We walk humbly with God by growing personally in discipleship by worship, prayer, and study. These areas are how we live out the life we've been given by God.

1 Thessalonians 5:21: "Test everything. Hold on to what is good." Martin Luther (the person) said that the church should always be reforming. As the world continues to change, we must continue to ask how we can best share the message of Jesus Christ. To reform, the church must change, BUT change doesn't mean that we lose our central message of Grace through the Cross of Jesus or that we throw everything out wholesale. This quote from Paul reminds us to ask questions like: "Does this way of doing things still work in our context? Where is it most important for us to put our energy right now? What needs aren't being met in our community?" The Holy Spirit is a restless and wily one and we need to be always attentive to where we are being led today.

As we seek the leading of the Spirit together, I give thanks for you and the work you have accomplished here at Martin Luther for the sake of Christ and our world and I pray that the best of this congregation's ministry is yet to come.

In God's Amazing Grace,

Pastor Ari

## Contacting Pastor Ari

If you need to contact me, you can reach me in the office or my cell phone, which is 262-501-3996. My home number is 262-446-6897, but please always try my cell phone first. I always have it precisely so that I'm available. My email is [pastor@martinlutherchurch.net](mailto:pastor@martinlutherchurch.net). Please note: if you or a family member is in the hospital, please call me to let me know. Hospitals do not call churches to let us know (often even when you ask them to), so I will only know if you tell me.

## Get-to-Know-You Sessions

Over the next couple months, I will be having Get-to-Know-You Sessions at various times for groups of 8-12 at a time. All members of Martin Luther are encouraged to attend one. This will be a chance for me to learn names and stories, share my own story with you, and also gather information that will help me be effective and efficient in my work as your pastor. Feel free to sign up with friends or family and bring kids along (their voice is important too!). Look for sign-up sheets with times and dates in the fellowship hall.

Thank you,  
Pastor Ari

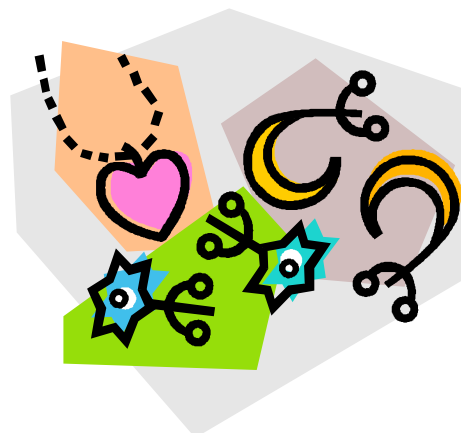


## Find us on Facebook!

Martin Luther is now on facebook! You can find us by visiting [www.facebook.com/martinlutherchurch](http://www.facebook.com/martinlutherchurch) and "like" us to see our updates in your newsfeed. Our facebook page is a place to share information on activities, share your own ideas and stories, and see photos of what we've been up to. Even if you don't have a facebook account, you can still visit our page to see what's going on. Look for other online connections soon! If you'd like to friend Pastor Ari go to [facebook.com/pastor.ari](http://facebook.com/pastor.ari).

## Youth Fundraiser

It's that time of year. The Youth will be having a Jewelry by Darlene fundraiser on Sunday, December 11th starting at 8:00 a.m. and ending after the 10:30 service. Come and get some of your Christmas shopping done while helping the youth earn money for their trip to the National Youth Convention in New Orleans. Any questions call Darlene Ziemendorf at 414-453-5408.



## Become Part of the Advent Conspiracy

Let's be honest. We have a love/hate relationship with the holidays. We love the joy, music, and presents, but we also hate the stress, expense, and busy-ness that comes with that. Christmas doesn't have to be like that, though. As we head into another season of Hope this Advent, consider finding ways to make this time more meaning-full for you and your family...

- Start by visiting [RethinkingChristmas.com](http://RethinkingChristmas.com), which is full of ideas. (Be sure to watch the cool video!)
- Replace one gift to someone with a gift made in their name to a charity. Try giving to Burbank School, Tosa Cares, or find cool things at [LWRgifts.org](http://LWRgifts.org). (Hint: ask your children to decide where they'd like to send their "gift." They love getting to make decisions.)
- As a family or with your grandchildren, go shopping for a bag of groceries for Tosa Cares. Share with your children how Jesus fed the hungry and asks us to do the same.
- Give homemade coupons. Kids can give coupons redeemable for chores. Parents or grandparents can give coupons redeemable for two hours of "you and me time." Get creative.
- Give the gift of family time. Instead of getting crazy with cooking and shopping, intentionally set aside (quiet) time with family or friends to watch movies, play board games, or talk about favorite Christmas memories. (Hint: include grandparents or other relatives.)
- Say a mealtime prayer where everyone gives thanks for one gift they received from God this year--that didn't cost anything.
- Read Luke 2 as a family and share what the Christmas story means to you. Your kids or grandkids will be interested to hear, even if they don't act like it!

Despite everything our culture tells us, Christmas doesn't have to be busy, overwhelming or expensive. It should be filled with the joy of God's love for us. Consider adopting one new thing to create an alternative Christmas. Who knows? You may start a new tradition!



## Sunday School Heifer International Project

The Sunday School kids will be using their Sunday school offerings and collecting money for the Heifer International project. They love doing this and this year Heifer has educational worksheets that we will be using to learn more about the animals and the countries.



## Giving Tree

The Giving Tree is now up and names are available for choosing. We ask you to return your gifts to church by December 11th so we can distribute them before school lets out for winter vacation. Some assistance with delivery will be needed. Thanks so much for your love and care for the children at Burbank!





## Council This & That Social Outreach

This January I will complete my second term on Church Council giving me just over 6 years of serving in this capacity. Over this time we have served over 220 families at Burbank School with Thanksgiving baskets; over 700 students with Christmas gifts; homeless men, women and children with underwear; students with school supplies, coats and boots. We have provided personal hygiene gifts and cookies to those in the County Behavioral Health Facility; meals and cleaning supplies to Serenity Inn, and many other projects that involve caring for the body. I thank you all for your participation in these projects and hope that it will continue into the future. This year we will have served 39 families at Burbank, over a third of which have 9 or more family members, with the largest being 12 members. We will have collected gifts for 117 students for Christmas, as well. This has been possible in part because of generous matching gifts for each of these activities from Thrivent Financial Service's charitable giving. It has always been possible because of the congregation being there at the time when the need was the greatest.

I also want to take the congregation through another aspect of our outreach, social justice. We have become a Reconciling in Christ congregation. Each and every day on our website, in our bulletins and newsletters, we welcome all openly regardless of race, gender identity, sexual orientation, physical or mental ability, or economic status. We live our Christian values every day. We have been on a true journey together. I thank each and everyone of you for the support you have given me in my transition and for the open acceptance of all who enter our doors. We open our building to support groups for drug and alcohol abuse, to those trying to cope with mental health issues, those who are trying to understand their children's or spouse's gender or sexual identity, and even try to help those in financial difficulty. I am proud to be a member of this congregation and encourage you to continue to open your hearts, minds and wallets to those in this world who continue to cry out for social justice and just plain help. I ask you to continue this act without complaint as our Savior and Lord has called on us to do. There is always need around us. Answer the call for compassion without judgment or reservation.

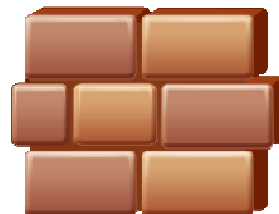
Valery Meyer

---

**The Cantare Chorale, directed by Lani Knutson, will present *Songs of the Seasons* on Sat., Dec. 10 at 7pm at South Milwaukee Performing Arts Center. See Lani if you are interested in purchasing advance tickets for this concert.**

## Memorial Garden News

The hardscape is in – as are the first round of Memorial Bricks. Please take a look next time you come up the main walk. We expect the second round of bricks to be ready by the time you get this newsletter and hope to still get them in this year, but it will depend on the weather.



GROWING  
TOGETHER  
IN  
FAITH

If you haven't bought a brick, please consider doing so. The forms are in the narthex of the church - \$35/brick, no limit on the number of bricks you can purchase. They will be placed in the darker "cross" portion of the brickwork. Buying bricks will be an on-going project, so if you didn't purchase a brick for the initial planting, you will be able to purchase bricks in the future. The purchase of bricks is not limited to specifically honor or memorialize someone. You can just buy a brick because you want to! What about celebrating a retirement, anniversary, birthday, or any other special event in your life? Please contact Mary Felkner, 262-814-1940 ([mryflk@aol.com](mailto:mryflk@aol.com)) with questions.

## Bible Study

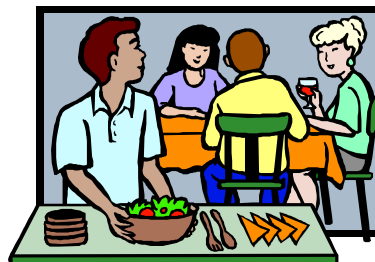
- **The Women's Study Group** continues the 2nd Monday of the month from 7–8:30 p.m. with Pastor Richard Weeden leading discussion about 2 Corinthians.
- **The Men's Study Group** continues the 3rd Thursday of the month from 7–8:30 p.m. with Pastor Richard studying Colossians.
- These studies have become popular with a number of congregational members (and other guests – all are welcome) who have found meaning in them including spirited (in more ways than one!) discussions and understanding the Bible at a deeper level as well as making it relevant. Please join us.



**Attention: The newsletter deadline for January 2012 issue of *The Door* is Thursday, December 15th at 12:00 p.m.**

## FELLOWSHIP OPPORTUNITIES

**No December Fellowship activities. Watch for dates in January 2012 for Lunch Bunch and MLFryars Fish Fry Friday. All are welcome!**



## Financial News

Here's our giving in the areas of Operating Fund and Mortgage Fund so far this year:

January:	\$25,611
February:	\$19,895
March:	\$19,642
April:	\$19,394
May:	\$18,880
June:	\$16,597
July:	\$21,311
August:	\$16,228
September	\$18,167
October:	\$24,059



We are definitely improving with our church giving, but we are still behind for the year. Again, if you are able to make up your pledge or give a little more generously, please do so. Please contribute as you are able.

We are currently determining our budget for 2012. If you have not pledged, it's not too late to do so. The yellow pledge cards are in the narthex as are the Time and Talent sheets. Just fill them out and drop them in the offering plate on Sunday. Pledging makes it so much easier for the Stewardship Committee to determine our 2012 budget.

---

Sunday December 11th the MLC Book Group will discuss The Irrational Season: A Crosswick Journal by Madeleine L'Engle at 6 p.m. at Church. This journal follows the church year from Advent to Advent, reflecting on its seasons and spiritual rhythms as they are reflected in the life of the church and of the author. Journey through the year with this popular author of both children's and adult books.

For those of you that like to plan (and read) ahead here are some future dates and selections:

Sunday, January 8th	<u>Water for Elephants (Book &amp; Movie)</u> by Sara Gruen
Sunday, February 12th	<u>Why I Wake Early</u> (Poetry) by Mary Oliver <u>The Anthologist</u> by Nicholson Baker
Sunday, March 11th	<u>Unbroken: A World War II Story of Survival, Resilience, and Redemption.</u> By Laura Hillenbrand



Questions? Call Katy Almond 414-454-0487 or Carla Stensberg 262-821-5454

---

**The Lutheran A Cappella Choir of Milwaukee** invites you to experience the joy and majesty of the Christmas Season as they present their annual Christmas Concert, "An English Christmas." Concerts take place on Friday, December 9th at 7:30PM at Christ the King Lutheran Church, 1600 N. Genesee St. in Delafield, and Sunday, December 11th at 3:00PM at St. Matthew's Lutheran Church, 1615 Wauwatosa Ave. in Wauwatosa. Receptions will follow each of the concerts. Tickets are \$15.00 general admission and \$12.00 for seniors and students. Tickets may be obtained from the choir's website - [www.lutheranacappella.org](http://www.lutheranacappella.org), or at the door.



### GRATITUDE

Thank you all for making Art's funeral a wonderful, meaningful event. You will never know how much you've helped us get through this devastating event. May God be with each and all of us as we remember Art and continue our own lives without him.

Nancy Langlas, Amy and Barry Burns, Jestine Langlas, Sarah Burns, Marilyn Heiden and Royce Heller

### In Our Prayers

### Go Out To



Dennis Groth, Colin Rankin, Garl and Ellen Burns, Kevin Orndoff, Kendall Baer, Eloise South, Richard Rindt, Kathy Holat, Betty Erickson, Dennis Butler, Fred Meyer, Esther Kivimaki, Maryann Gorski, and Duane Natzke

GROWING  
TOGETHER  
IN  
FAITH



**A heartfelt thanks to our A-one Cleaning Crew for all their time and effort at the Fall Clean-up on November 12th.**

Deanna Ingrelli

Barb Liedtke

Bruce South

Donna Hoppe

Tom Jones

Sandy Svitak

Amy Fox

Ray LeMay

Pat Olson

Sawyer Fox

LouAnn Reed

Carla Meyer

Veda Fox

Jeff Reed

Carla Stensberg

Dona Smith

Bob Peterson

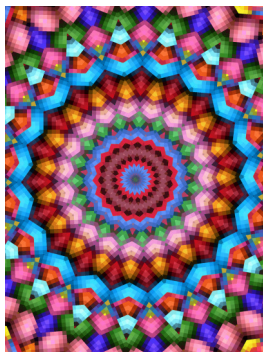
Cheryl Lonsdorf



WOMEN OF  
THE ELCA

## WELCA FUTURE DATES TO ADD TO YOUR CALENDAR

December 6, 2011	WELCA Board Meeting
February 4, 2012	Spiritual and Physical Time for Renewal
February 19, 2012	Phat Sunday Bake Sale
February 29, March 7, 14, 21, 28, 2012	Lenten Soup Suppers
April 8, 2012	Easter Breakfast
May 22, 2012	May Banquet



### Prayer Shawl Ministry

Members of Martin Luther Church - Those of you who knit and/or crochet, please contact me. We would like to put that talent to work in our Prayer Shawl Ministry. Yarn will be provided and any pattern is acceptable. Jeanne Johnson 414-423-1190

### Bible Study Group

Pastor Richard Weeden will be leading a discussion on 2nd Corinthians on the 2nd Monday of every month at 7:00pm in the Conference Room. Please join us on December 12th for lively discussions and fellowship.



**Thrivent Financial for Lutherans®**

**Let's thrive.®**

**Thrivent** has given us financial assistance with our Prayer Shawl Ministry and Thanksgiving Baskets again this year. We wish to give our heart filled THANK YOU for their gifts which enables us to continue with our Ministry. Thank you again, THRIVENT.

**The Behavioral Health Division of the Milwaukee County Department of Health & Human Services** is always in need of articles to use as Christmas gifts. Some examples of items needed:



- Make-up & Lipstick
- Hair Accessories
- Family oriented DVDs
- Picture & Coloring Books
- Playing Cards
- Jigsaw Puzzles
- Knits Gloves & Hats
- Word Search Books
- Board Games
- Tote & Sport Bags
- Blankets
- Robes
- Fast Food Gift Cards
- Pajamas
- Christmas and Team Sweatshirts
- Calendars
- Baseball Caps
- Cologne , Perfume & Aftershave (plastic bottle)
- Pen/Pencil Set
- Socks & Nylons
- Blankets & Comforters
- Jackets & Sweatshirts
- Craft Kits
- Comb/Brush Sets
- Slippers (women's sizes 6-10, Men's 10-12)
- Radios & Small Boom Boxes
- Lotions/Dusting Powder
- Clip-on Earrings & Bracelets
- 

**A YEAR ROUND APPEAL** Save those Soda and Beer tabs and old working



**Cell Phones\*** for the Ronald McDonald House



\*No cell phone accessories needed.

**Calling all Sunday School children, Confirmation students and high school students!**



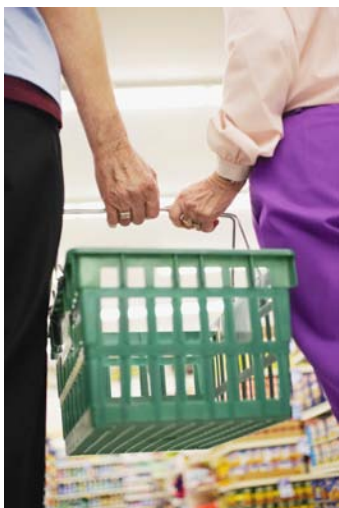
We would like you to be involved in the 4 p.m. Christmas Eve Family Service. Contact Lani Knutson ([lani.knutson@gmail.com](mailto:lani.knutson@gmail.com) or 414-477-9364) if you are interested in a speaking role, singing a solo or with a group, or playing an instrument for this service. Rehearsals will be held on Sun. mornings in Dec. 9:15-10:15am.

## VOLUNTEER OPPORTUNITY

We have a volunteer opportunity for various position with Home & Hospice Advantage. They provide volunteers to visit with those in the last stages of their lives to provide companionship, friendship and compassion to those in need of home and nursing home hospice care. A letter and contact information is posted on the kiosk in the Narthex.



Valery Meyer, Social Outreach Chair



## Another Volunteer Opportunity

### Greater Tosa Interfaith

Greater Tosa Interfaith is searching for people who might be willing to take an older adult to the grocery store once or twice a month. This is a good opportunity for people who work during the week. Hours are flexible; rewards immense. You will be able to make life easier for one of your neighbors with just a few hours of your time. Please call the Greater Tosa Interfaith office at 414-453-5750 to find out how you can help!



## Food Donations

Please remember to bring food and cash donations for the Tosa Cares food barrel. There is an increasing number of people relying on Tosa Cares!



## Members Celebrating Wedding Anniversaries in December

Josh & Carrie Wensing	12/15
Jay & Kimberly Shields	12/19
Richard & Beverly Weeden	12/28

*If you are celebrating a wedding anniversary this month and your name is not listed, please call the church office with this information. Also, please notify the office if your wedding anniversary date is incorrect.*

**WORSHIP SCHEDULE**  
**October 2011**

Date	GREETER *(Darlene Ziemendorf 453.5408)	USHER *(Barry Dahlgren 543.7383)	Acolyte *(Darlene Ziemendorf 453.5408)	ASSISTING MINISTER & LECTOR *(Carla Stensberg 262.821.5454)	COMMUNION PRESENTER *(Kathy Holat 258.6362)	COFFEE HOUR HOST(S) *(Carol Moore 476.5999)	NURSERY ATTENDANT *(Darlene Ziemendorf 453.5408)	MONEY COUNTERS *(Jeff Reed 774.9543)	ALTAR GUILD *(Janice Camus 464.0708)
Oct 2	<u>8am</u> Peter Beitzel <u>10:30am</u> Amber Anderson	<u>8am</u> Roy Sandner & Barry Dahlgren <u>10:30am</u> Ray LeMay & Chad Burks	Evan Solie  <u>Sound &amp; Light</u> Ernie & Pat Olson	<u>AM</u> Lani Knutson <u>L</u> Scott Manske	Darlene Freels & Carla Stensberg	WELCA	Stephanie Muller	#1 Jerry Smeiska	Carol Moore  <u>Bread Baker</u> Valery Meyer
Oct 9	<u>8am</u> Sandy Elliot <u>10:30am</u> Debbie Anderson	<u>8am</u> Jeanne & Brian Johnson <u>10:30am</u> Amy & Kegian Fox	Zebedee Summers  <u>Sound &amp; Light</u> Donna Hoppe	<u>AM</u> Carol Henk <u>L</u> Fred Meyer	Michael & Veda Fox	Todd & Michelle Wenzel	Erin Ziemendorf	#6 Carla Stensberg	Wendy Buettner  <u>Bread Baker</u> Darlene Freels
Oct 16	<u>8am</u> Jeff Reed <u>10:30am</u> Barry Dahlgren	<u>8am</u> Jon Ziemendorf & Peter Beitzel <u>10:30am</u> Amber Anderson & Bruce South	Veda Fox  <u>Sound &amp; Light</u> Chad Burks	<u>AM</u> Al Hoff <u>L</u> Mary Meyer	Debbie Burks & Donna Hoppe	Youth	Sara Bailey	#5 Janice Camus	Janice Camus  <u>Bread Baker</u> Deb Burks
Oct 23	<u>8am</u> Nancy Sack <u>10:30am</u> Amy Fox	<u>8am</u> Jeff & LouAnn Reed <u>10:30am</u> Tom & Carol Moore	Claire Manske  <u>Sound &amp; Light</u> Darlene Ziemendorf	<u>AM</u> Kathy Holat <u>L</u> David Muller	Janice Camus & Darlene Ziemendorf	Tom & Carol Moore	Todd & Michelle Wenzel	#4 Jeff Reed	Jane Breitlow  <u>Bread Baker</u> Beverly Weeden
Oct 30	<u>8am</u> LouAnn Reed <u>10:30am</u> Michael Fox	<u>8am</u> Al Hoff & Roy Sander <u>10:30am</u> Ray LeMay & Donna Hoppe	Jacob Burks  <u>Sound &amp; Light</u> Ernie & Pat Olson	<u>AM</u> Petra Brylow <u>L</u> Valery Meyer	Darlene Freels & Janet Pomush	Amber Anderson	Rob & Wendy Buettner	#3 Bruce South	Karen LeMay  <u>Bread Baker</u> Darlene Ziemendorf

\*Coordinator

**WORSHIP SCHEDULE  
November 2011**

Date	GREETER *(Darlene Ziemendorf 453.5408)	USHER *(Barry Dahlgren 543.7383)	Acolyte *(Darlene Ziemendorf 453.5408)	ASSISTING MINISTER & LECTOR *(Carla Stensberg 262.821.5454)	COMMUNION PRESENTER *(Kathy Holat 258.6362)	COFFEE HOUR HOST(S) *(Carol Moore 476.5999)	NURSERY ATTENDANT *(Darlene Ziemendorf 453.5408)	MONEY COUNTERS *(Jeff Reed 774.9543)	ALTAR GUILD *(Janice Camus 464.0708)
Nov 6	<u>8am</u> Roy Sandner <u>10:30am</u> Scott Kivimaki	<u>8am</u> Brian & Jeanne Johnson <u>10:30am</u> Chad Burks & Paul Meyer	Jared Anderson  <u>Sound &amp; Light</u> Ernie & Pat Olson	<u>AM</u> Carla Stensberg <u>L</u> Stephanie Muller	Deanna Ingrelli & Jean Maurer	No Coffee Hr. due to Steward- ship event	Rachel Rankin	#2 Mary Meyer	Valery Meyer  <u>Bread Baker</u> Jean Maurer
Nov 13	<u>8am</u> Mary Felkner <u>10:30am</u> Tom Jones	<u>8am</u> Jeff & LouAnn Reed <u>10:30am</u> Sandra Svitak & Ray LeMay	Aliyah Rankin  <u>Sound &amp; Light</u> Donna Hoppe	<u>AM</u> Fred Meyer <u>L</u> Diane Sack	Amy & Sawyer Fox	WELCA	Nick Dominick & Mary Felkner	#1 Jerry Smeiska	Pat Denning  <u>Bread Baker</u> Lani Knutson
Nov 20	<u>8am</u> Al Hoff <u>10:30am</u> Janet Pomush	<u>8am</u> Jon Ziemendorf & Peter Beitzel <u>10:30am</u> Tom Jones & Donna Hoppe	Brianne Burks  <u>Sound &amp; Light</u> Chad Burks	<u>AM</u> Mary Meyer <u>L</u> Jerry Smeiska	Judie Born & Melanie Strom	Youth	Erin Ziemendorf	#6 Carla Stensberg	Amber Anderson  <u>Bread Baker</u> Dona Smith
Nov 27	<u>8am</u> Jeanne Johnson <u>10:30am</u> Debbie Anderson	<u>8am</u> Al Hoff & Roy Sander <u>10:30am</u> Art & Nancy Langlas	Tanya Falkowski  <u>Sound &amp; Light</u> Darlene Ziemendorf	<u>AM</u> Valery Meyer <u>L</u> Lyn South	Mary Meyer & Kathy Holat	Sandra Svitak	Sara Bailey	#5 Janice Camus	Ginny Smeiska  <u>Bread Baker</u> Carla Meyer

\*Coordinator

**WORSHIP SCHEDULE**  
December 2011

Date	GREETER *(Darlene Ziemendorf 453.5408)	USHER *(Barry Dahlgren 543.7383)	Acolyte *(Darlene Ziemendorf 453.5408)	ASSISTING MINISTER & LECTOR *(Carla Stensberg 262.821.5454)	COMMUNION PRESENTER *(Kathy Holat 258.6362)	COFFEE HOUR HOST(S) *(Carol Moore 476.5999)	NURSERY ATTENDANT *(Darlene Ziemendorf 453.5408)	MONEY COUNTERS *(Jeff Reed 774.9543)	ALTAR GUILD *(Janice Camus 464.0708)
Dec 4	<u>8am</u> Brian Johnson <u>10:30am</u> Darlene Freels	<u>8am</u> Barry Dahlgren & Jon Ziemendorf <u>10:30am</u> Scott & Sam Kivimaki	Sawyer Fox  <u>Sound &amp; Light</u> Ernie & Pat Olson	<u>AM</u> David Muller <u>L</u> Judie Born	Nancy Langlas	WELCA	Todd & Michelle Wenzel	#4 Jeff Reed	Lyn South  <u>Bread Baker</u> Darlene Ziemendorf
Dec 11	<u>8am</u> Miriam Werner <u>10:30am</u> Amy Fox	<u>8am</u> Jeff & LouAnn Reed <u>10:30am</u> Amber Anderson & Sandra Svitak	Tommy Linn  <u>Sound &amp; Light</u> Donna Hoppe	<u>AM</u> Carla Stensberg <u>L</u> Melanie Strom	Ray & Karen LeMay	Valery Meyer	Rob & Wendy Buettner	#3 Bruce South	Diane Sack  <u>Bread Baker</u> Lois Fuhrmann
Dec 18	<u>8am</u> Peter Beitzel <u>10:30am</u> Kegian Fox	<u>8am</u> Al Hoff & Peter Beitzel <u>10:30am</u> Barry Dahlgren & Jon Ziemendorf	Sam Kivimaki  <u>Sound &amp; Light</u> Chad Burks	<u>AM</u> Dennis Brylow <u>L</u> Amber Anderson	Carol Henk & Nancy Sack	Youth	Rachel Rankin	#2 Mary Meyer	Wendy Buettner  <u>Bread Baker</u> Melanie Strom
Dec 24	<u>5pm</u> Amber Anderson  <u>10:30pm</u> Nancy Langlas	Paul Meyer & Chad Burks  Ray LeMay & Tom Jones	Sawyer Fox  <u>Sound &amp; Light</u> Darlene Ziemendorf  Claire Manske  <u>Sound &amp; Light</u> Chad Burks	<u>AM</u> Petra Brylow <u>L</u> Sara Bailey  <u>AM</u> Kathy Holat <u>L</u> Judie Born	Debbie Burks & Deanna Ingrelli		None		<u>5pm</u> Amber Anderson  <u>10:30 pm</u> Janice Camus  <u>Bread Baker</u> Deb Burks
Dec 25	<u>10:30am</u> Lyn South	<u>10:30am</u> Amy & Kegian Fox	Erik Solie  <u>Sound &amp; Light</u> Darlene Ziemendorf	<u>AM</u> Carol Henk <u>L</u> Dennis Brylow	Janis Camus	Christmas	None	#1 Jerry Smeiska	Valery Meyer  <u>Bread Baker</u> Valery Meyer

\*Coordinator

## DECEMBER 2011

Sunday	Monday	Tuesday	Wednesday	Thursday	Friday	Saturday
<b>27</b> Mt. Meru Coffee Orders <b>8:00 AM</b> Early Worship Service <b>10:30 AM</b> Late Worship Service <b>11:30 AM</b> Coffee Hour <b>4:00 PM</b> Mennonite Service	<b>28</b> <b>8:00 PM</b> AA Group Meets	<b>29</b>	<b>30</b> <b>11:00 AM</b> Serenity Inn Meeting <b>6:00 PM</b> AA Women <b>7:10 PM</b> Adult Choir <b>7:30 PM</b> Naranon	<b>1</b> <b>7:00 PM</b> Al Anon	<b>2</b> <b>9:30 PM</b> AA	<b>3</b> <b>7:00 AM</b> Overeaters Anonymous
<b>4</b> Mt. Meru Coffee Orders <b>8:00 AM</b> Early Worship Service <b>9:15 AM</b> Education Hour <b>10:30 AM</b> Late Worship Service <b>11:30 AM</b> WELCA Coffee Hour	<b>5</b> <b>7:00 PM</b> WELCA Board Meeting <b>8:00 PM</b> AA Group Meets	<b>6</b>	<b>7</b> <b>6:00 PM</b> AA Women <b>7:00 PM</b> Widow/Widowers Club <b>7:10 PM</b> Adult Choir <b>7:30 PM</b> Naranon	<b>8</b> <b>7:00 PM</b> Al Anon	<b>9</b> <b>9:30 PM</b> AA	<b>10</b> <b>7:00 AM</b> Overeaters Anonymous <b>12:00 PM</b> Brownie Troup
<b>11</b> Mt. Meru Coffee Orders <b>8:00 AM</b> Early Worship Service <b>9:15 AM</b> Education Hour <b>10:30 AM</b> Giving Tree Gifts Due <b>10:30 AM</b> Late Worship Service <b>10:30 AM</b> Schmidtke Baptism <b>11:30 AM</b> Coffee Hour <b>6:00 PM</b> MLC Book Group	<b>12</b> <b>7:00 PM</b> Women's Study Group <b>8:00 PM</b> AA Group Meets	<b>13</b> <b>7:00 PM</b> WELCA Bible Study	<b>14</b> <b>6:00 PM</b> AA Women <b>7:10 PM</b> Adult Choir <b>7:30 PM</b> Naranon	<b>15</b> <b>12:00 PM</b> Newsletter Deadline <b>7:00 PM</b> Al Anon <b>7:00 PM</b> Men's Study Group	<b>16</b> <b>9:30 PM</b> AA	<b>17</b> <b>7:00 AM</b> Overeaters Anonymous
<b>18</b> Mt. Meru Coffee Orders <b>8:00 AM</b> Early Worship Service <b>8:00 AM</b> Pastor Ari's Installation <b>8:00 AM</b> Youth Fundraiser <b>9:15 AM</b> Education Hour <b>10:30 AM</b> Late Worship Service <b>11:30 AM</b> Youth Coffee Hour <b>5:00 PM</b> PFLAG	<b>19</b> <b>8:00 PM</b> AA Group Meets	<b>20</b> <b>7:00 PM</b> Council Meeting	<b>21</b> <b>6:00 PM</b> AA Women <b>7:10 PM</b> Adult Choir <b>7:30 PM</b> Naranon	<b>22</b> <b>5:30 PM</b> Serenity Inn Dinner - Off Site <b>7:00 PM</b> Al Anon	<b>23</b> <b>9:30 PM</b> AA	<b>24</b> <b>7:00 AM</b> Overeaters Anonymous <b>4:00 PM</b> Christmas Eve Family Service <b>10:10 PM</b> Carol Sing <b>10:30 PM</b> Candlelight Service
<b>25</b> Mt. Meru Coffee Orders <b>10:30 AM</b> Christmas Day Service	<b>26</b> <b>8:00 PM</b> AA Group Meets	<b>27</b>	<b>28</b> <b>6:00 PM</b> AA Women <b>7:10 PM</b> Adult Choir <b>7:30 PM</b> Naranon	<b>29</b> <b>7:00 PM</b> Al Anon	<b>30</b> <b>9:30 PM</b> AA	<b>31</b> <b>7:00 AM</b> Overeaters Anonymous

Martin Luther Church, ELCA  
9235 West Bluemound Road  
Milwaukee, WI 53226-4406

ADDRESS SERVICE REQUESTED



---

**Members Celebrating Birthdays  
In December**

Kivimaki, Lynne	12/3	Kivimaki, Lynne	12/3
Ingrelli, Gina	12/4	Reichert, Maximillian	12/18
Smeiska, Kori	12/4	Kusserow, John	12/19
Danko, Susan	12/5	Burns, Sarah	12/21
Muhar, Andrew	12/6	Molina, Brittaney	12/21
Salkin, Debra	12/7	Stensberg, Carla	12/22
Wenzel, Luke	12/8	Nelson, Annalise	12/24
Williams, Carol	12/15	Dahlgren, Jake	12/25
Anderson, John	12/17	Grob, Peter	12/26
Linn, Nancy	12/18	Richardson, Paula	12/26
Masullo, Tyler	12/18	Summers, Zachary	12/26

*If you are celebrating a birthday this month and your name is not listed, please call the church office with this information. Also, please notify us if the date for your birthday is incorrect.*